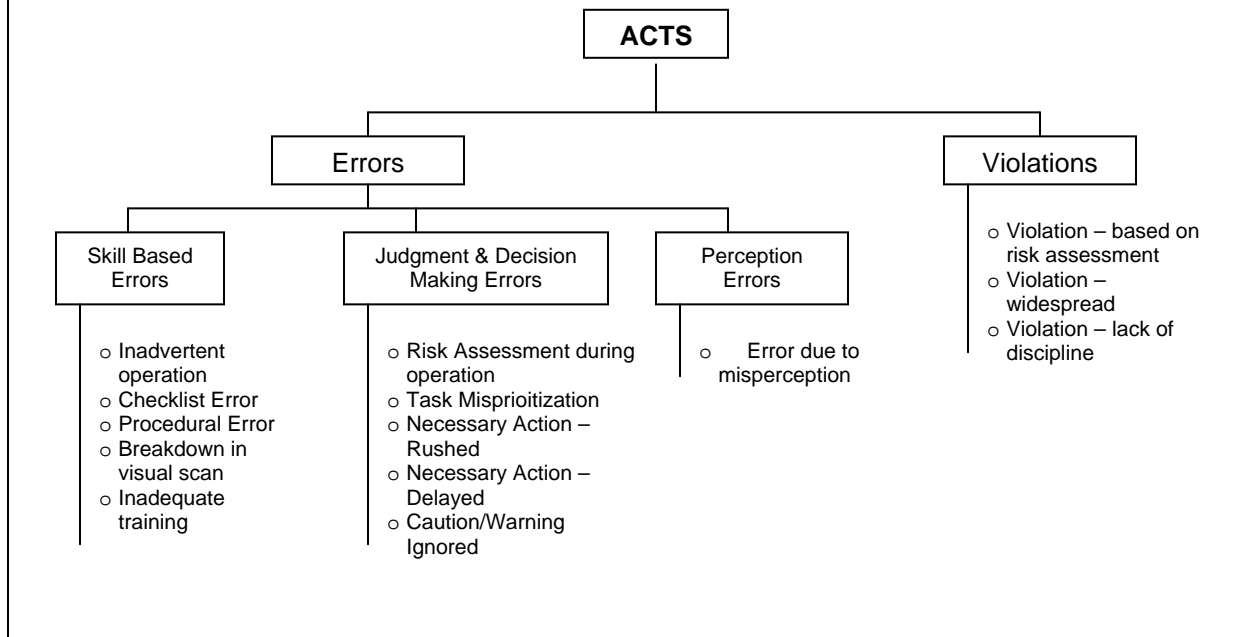


ROOT CAUSE ANALYSIS TABLES

Categories of Unsafe Acts (Taken from United States DOD)



Preconditions for Unsafe Acts
(Taken from United States DOD)

Preconditions

Environmental Factors

Conditions of Individuals

Personnel Factors

Physical Environment

Technical Environment

Cognitive Factor

Psycho Behavioral Factors

Adverse Physiological States

Physical and Mental Limitations

Perceptual Factors

Coordination Communication and Planning

Self Imposed Stress

- Vision Restrictions due to environment
- Excessive vibration
- Heat and Cold stress
- Wet environment
- Wind
- Brown out / White out
- Icy or slippery conditions

- Seating and restraints
- Visibility restrictions
- Controls and switches
- Workplace incompatible with human
- Communication
- Automation
- Instrumentation and sensory overload

- Inattention
- Confusion
- Distraction
- Task overload

- Per-existing personality disorder
- Pre-existing psychological disorder
- Emotional State
- Overconfidence
- Complacency
- Lack of Motivation
- Overaggressive
- Burnout
- Misplaced motivation
- Excessive motivation
- Get it done at all cost

- Poor vision
- Poor hearing
- Poor health
- Dehydration
- Hypothermia
- Heat stress / stroke
- Physical fatigue
- Pre-existing injury

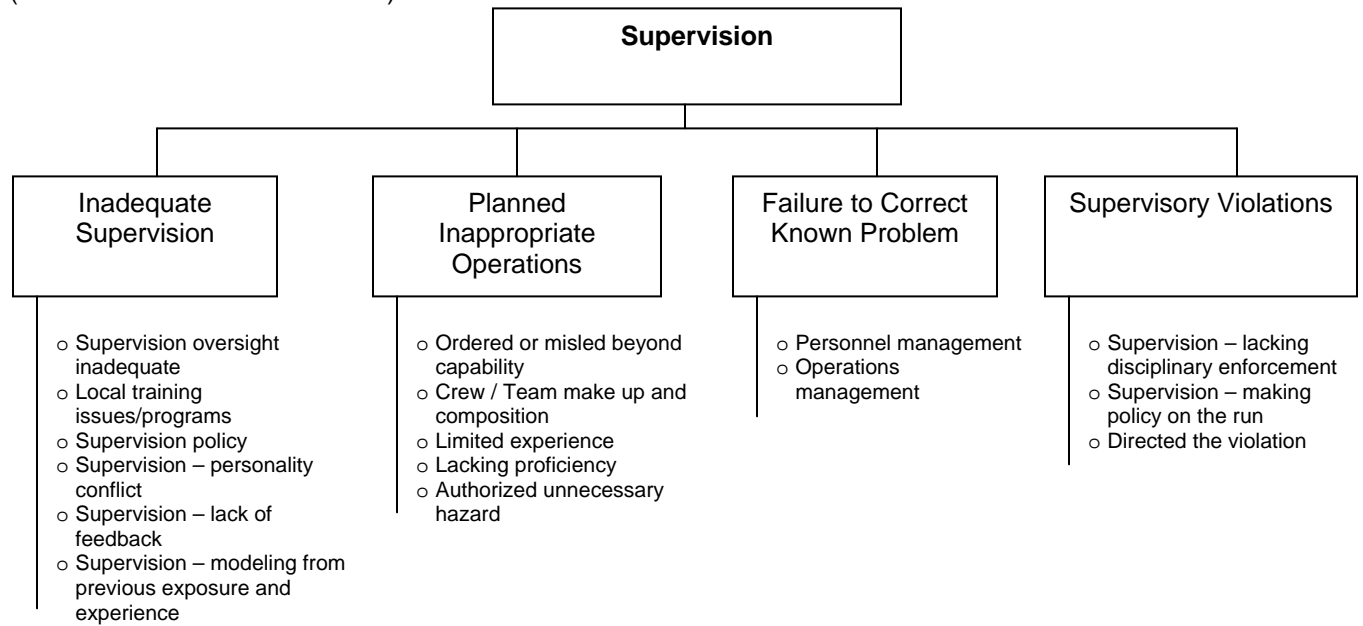
- Learning ability / rate
- Memory ability
- Motor skill ability
- Technical knowledge

- Illusion
- Spatial disorientation
- Misconception of conditions
- Misconception of physical abilities
- Misconception of work characteristics

- Team leadership
- Task delegation
- Job planning and briefing
- Miscommunication
- Communicating critical information
- Monitoring job and performance

- Physical fitness
- Drugs and alcohol
- Inadequate rest
- Not reporting poor medical / physical condition

Categories of Unsafe Supervision
(Taken from United States DOD)



Categories of Organizational Influences
(Taken from United States DOD)

